

**MAG**

**SQUARE**

# **PRESENTATION ON**



**SQUAREMAG SYSTEMS, HYDERABAD**

## BRIEFING ABOUT COMPANY

- ❖ Promoted by NDT professionals with 20+ years of rich experience in NDT field.
- ❖ Having manufacturing facility in Hyderabad .
- ❖ Expert staff for design , manufacturing , sales and service.
- ❖ Providing complete solutions for Magnetic particle, Penetrant Inspection methods and Aerospace special process and testing requirements.

## VISION:

- ❖ To become first choice Indian NDT Supply source for MPI & LPI equipments, accessories and chemicals by providing value added solutions & services and delivering best in the industry at optimum costs.

## FACILITIES:

- ❖ Manufacturing facility of 8000 SFT is centrally located in Hyderabad city.
- ❖ Equipped with assembly machinery, tooling, fixtures, Moulds, test benches, calibration kits, Auto transformers, Calibration lab, Transformer winding and vacuum impregnation facility, highly precision electronics testing facility, PCB Lab etc.
- ❖ Design systems with PRO-E and Auto cad software
- ☀ 3000 SFT of office area and separate storage area for keeping the inventory to deliver on time

# CAPABILITIES:

- ❖ Design and execute custom made MPI & LPI equipments with automation as per the requirement .
- ❖ Expertise in making 'FIT TO BUDGET' equipments.
- ❖ Experience in making Customized MPI equipments for shafts, gears, bearing rings, cam shafts, connecting rods, Crank shafts, Steering knuckles, FAB, Axles, wheels, spindles and many other auto parts, Aero engine and frame parts.
- ❖ Very familiar with all MPI & LPI national and International standards.
- ❖ Established many NDT testing facilities in both auto sector and Aerospace , well versed with audit requirements.

# PRODUCT RANGE:

- ❖ 750 Amps to 10,000 amps power sources with AC/HWDC or FWDC, 3 ph FWDC.
- ❖ 1000 – 6000 Amps wet horizontal bench type equipments.
- ❖ FPI Lines (standard & custom built)
- ✱ Different types of custom built MPI equipments as per the requirement.
- ✱ Yokes, 100 watt & 400 watt black lights.
- ✱ MPI & LPI accessories
- ✱ MPI & LPI chemicals.
- ✱ Penetrant wastewater treatment systems etc....



# SERVICES:

- ❖ Annual maintenance Contracts.
- ❖ Calibration of Intensity meters, Gauss meters, Black lights, yokes.
- ❖ Onsite calibration of MPI equipments.
- ❖ Repairing of MPI & LPI equipments.
- ❖ Up-gradation, retrofitting and refurbishment of old MPI & LPI equipments of any make.
- ❖ NDT Level III services like writing the procedures, technic sheets, people training and qualifying to the systems requirement, co-ordination for audit requirements, OEM approvals etc

## Business Associations:

- ❖ Chemetall - Rai,(Ardrox ,Oakite,Lumor) Germany for complete range of MPI & FPI products.
- ❖ 'Labino' for special Black lights
- ❖ NDT Consultants for NDT services and NDT accessories.
- ❖ KARL STORZ for video scopes and boroscopes.
- ❖ Many other international brand for MPI & LPI Accessories.



## **REACH AND MARKET SUPPORT:**

- ❖ Trained sales engineers all over India
- ❖ All India distribution network to enable the material availability locally.
- ❖ Expert service team for taking care of the after sales service. 24/365 online service support through phones and mails.

The logo consists of two vertical rectangular bars. The top bar is green and contains the word 'MAG' in white, bold, sans-serif capital letters. The bottom bar is orange and contains the word 'SQUARE' in white, bold, sans-serif capital letters.

**MAG**

**SQUARE**

# SOME OF OUR CUSTOMERS:

- ★ HINDUSTHAN AERONAUTICS LTD,
- ★ AIR INDIA
- ★ TARA AEROSPACE
- ★ TATA LOCHKEED MARTIN AEROSTRUCTURES LTD
- ★ MAHINDRA AEROSPACE
- ★ IAMPL (ROLLS ROYCE & HAL JV)
- ★ LMW ADVANCED TECHNOLOGY CENTRE
- ★ INDO US MIM TECH PVT LTD
- ★ MTAR TECHNOLOGIES
- ★ RANE ENGINE VALVES GROUP
- ★ AMTEK GROUP
- ★ GE POWER SERVICES
- ★ BHEL
- ★ JONEJA IRON AND STEELS
- ★ VIKAS GROUP
- ★ SYNERGY STEELS
- ★ HYT INNOVATIVE TECHNOLOGIES
- ★ S F L GROUP
- ★ ETC.....

**MAG**

**SQUARE**

STANDARD PRODUCTS

**SQUARE**

**MAG**

**SQUARE** **MAG** **BROCHURE** 

**SQUARE**

**MAG**

**SOME OF THE PROJECTS, WE  
HAVE EXECUTED**



# SQUARE MAG



CAPABILITY FOR BULK ORDERS



**MAG**

**SQUARE**



SEMI AUTOMATIC MPI EQUIPMENT FOR BRIGHT BAR TESTING,.

# SQUARE MAG



SEMI AUTOMATIC MPI EQUIPMENT FOR TURBINE BLADES TESTING,.

**SQUARE MAG**

**SQUARE**



**MPI EQUIPMENT FOR TESTING, OF SMALL PARTS**



**MAG**

**SQUARE**



**FPI SPRAY SYSTEM WITH ELECTROSTATIC SYSTEMS, LMW, COIMBATORE**

**MAG**

**SQUARE**



**FPI SPRAY SYSTEM WITH ELECTROSTATIC SYSTEMS,,INDO US MIM**



**SQUARE MAG**

**SQUARE**



**MAGNETIC PARTICLE INSPECTION EQUIPMENT SUPPLIED TO  
LMW, ATC, COIMBATORE**



**MAG**

**SQUARE**



**MAGNETIC PARTICLE INSPECTION EQUIPMENT SUPPLIED TO  
MACH AERO COMPONENTS (SAFFRON GROUP), BANGALORE**

**MAG**

**SQUARE**



**MAGNETIC PARTICLE INSPECTION SYSTEM FOR TESTING OF THIN PIPES.**



**SQUARE MAG**

**SQUARE**



**TYPICAL FPI LINES OF AEROSPACE FACILITIES**

**MAG**

**SQUARE**



**AEROSPACE PAINTING FACILITY**



# SQUARE MAG



**FPI FACILITY ALONG WITH PRE-CLEANING AND  
ELECTROSTATIC PENETRANT SPRAY TYPE FPI LINE**

**MAG**

**SQUARE**



**FPI FACILITY INSTALLED AT MAHINDRA AEROSTRUCTURES, BANGALORE**



**MAG**

**SQUARE**



**REGINSON FPI FACILITY**

# SQUARE MAG



FPI FACILITY UTILITIES



**SQUARE**

**MAG**



**FPI FACILITY UTILITIES**

**SQUARE MAG**

**SQUARE MAG**



**FPI FACILITY UTILITIES**



**SQUARE MAG**

**MAG**



**FPI FACILITY UTILITIES**

**SQUARE**

**MAG**

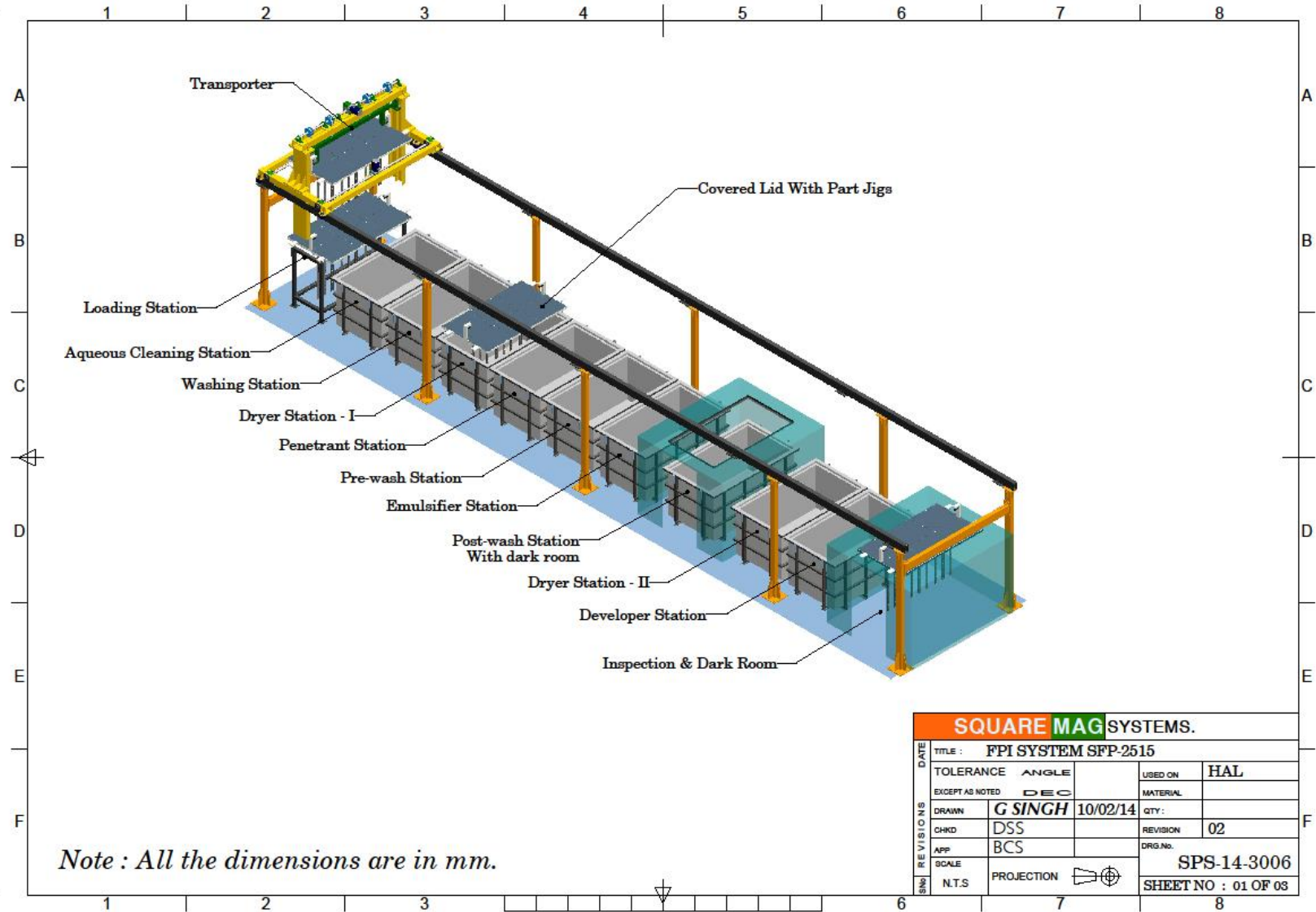
**POTENTIAL PROJECTS**





# MAG

# SQUARE

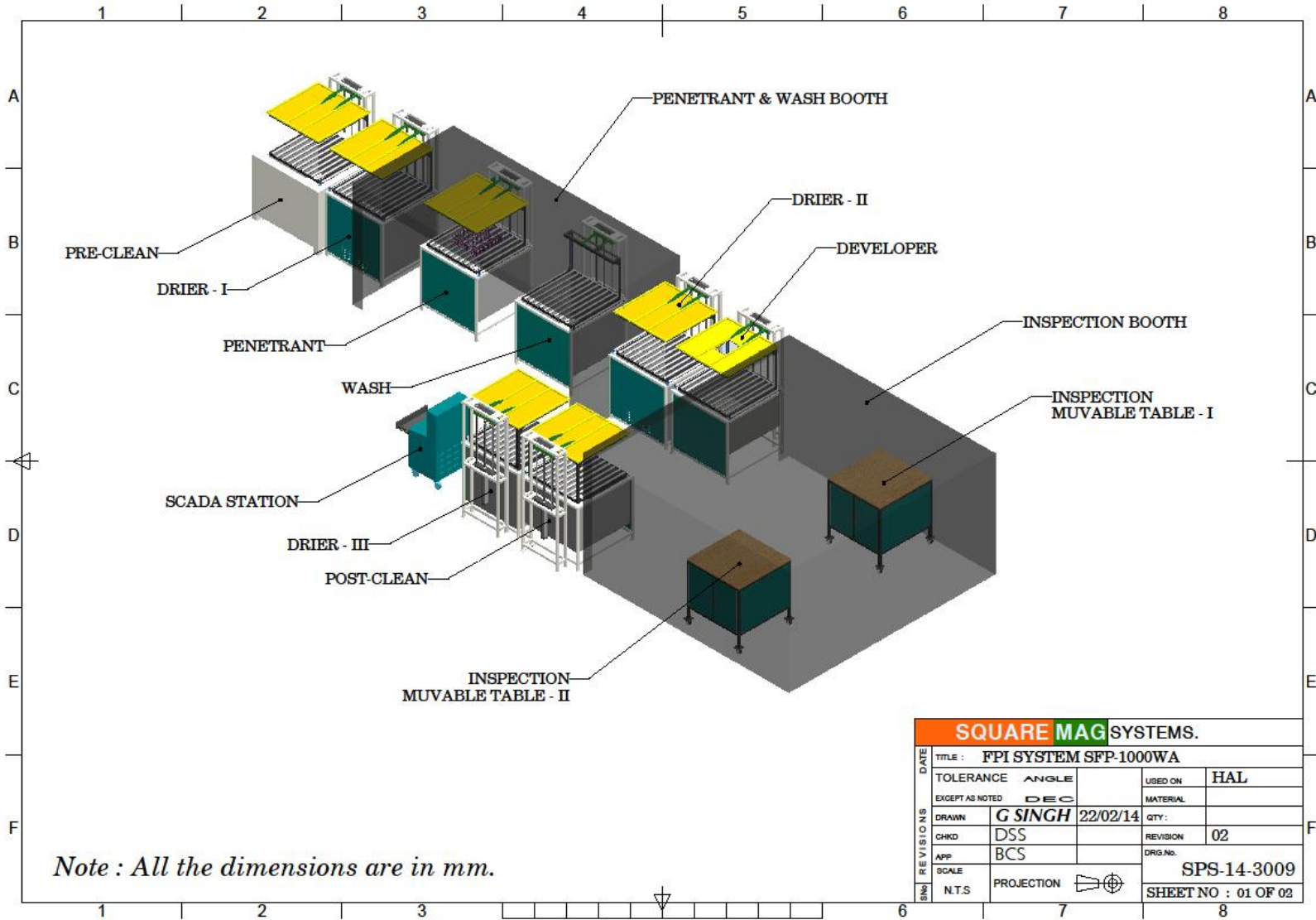


<b>SQUARE MAG SYSTEMS.</b>				
TITLE : <b>FPI SYSTEM SFP-2515</b>				
SIGN. REVISIONS	TOLERANCE	ANGLE	USED ON	HAL
	EXCEPT AS NOTED	DEC	MATERIAL	
	DRAWN	<b>G SINGH</b>	10/02/14	QTY :
	CHKD	DSS		REVISION
APP	BCS		DRG.No.	SPS-14-3006
SCALE	N.T.S	PROJECTION	SHEET NO : 01 OF 03	

**FPI FACILITY WITH PRE-CLEANING, HAL**

# SQUARE MAG

# SQUARE

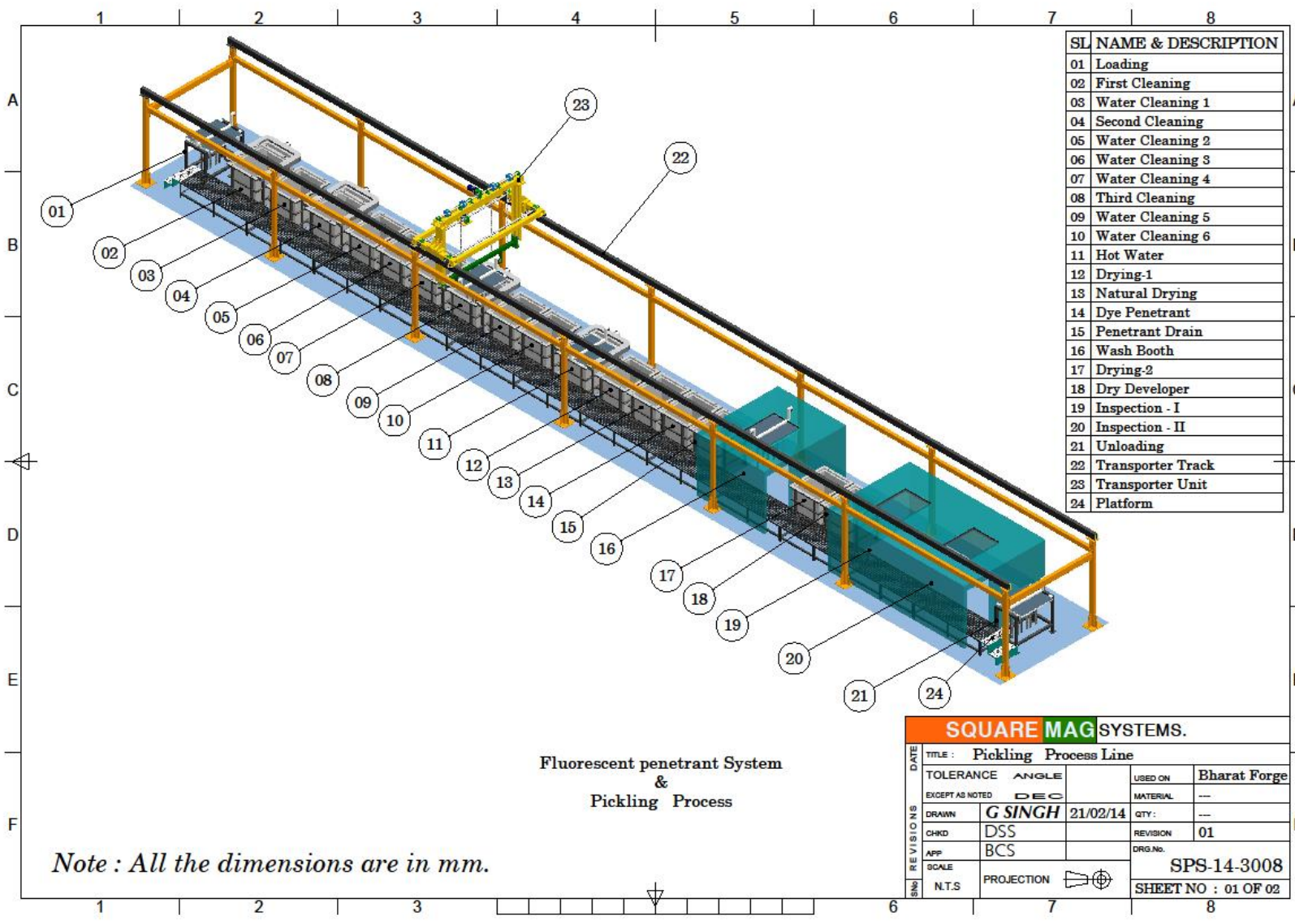


SQUARE MAG SYSTEMS.				
DATE	TITLE : FPI SYSTEM SFP-1000WA			
TOLERANCE	ANGLE	USED ON	HAL	
EXCEPT AS NOTED	DEC	MATERIAL		
DRAWN	G SINGH	22/02/14	QTY :	
CHKD	DSS		REVISION	02
APP	BCS		DRG.No.	SPS-14-3009
SCALE	N.T.S	PROJECTION	SHEET NO : 01 OF 02	

**FPI FACILITY WITH PRE-CLEANING, HAL**

# SQUARE MAG

# SQUARE

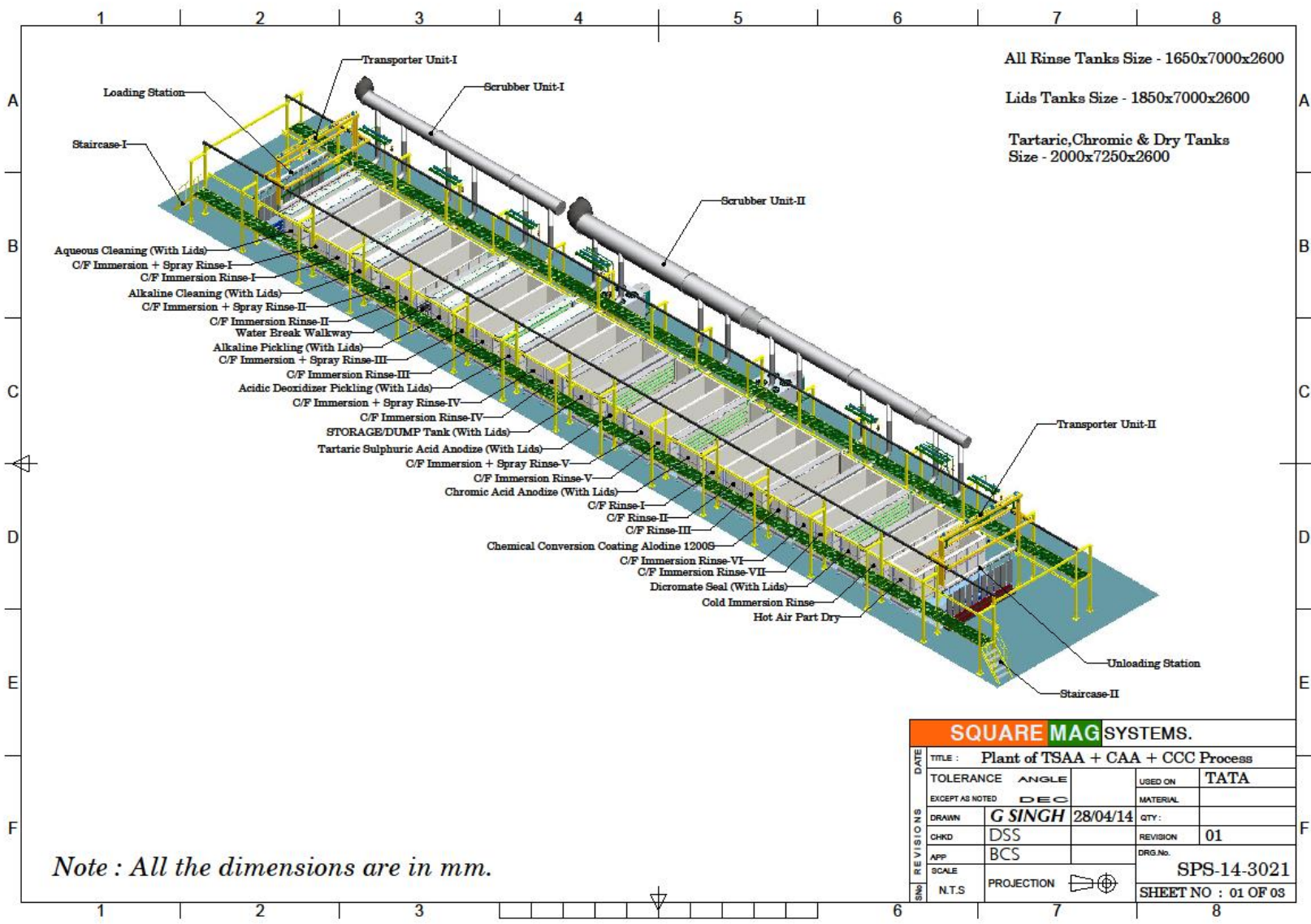


SL	NAME & DESCRIPTION
01	Loading
02	First Cleaning
03	Water Cleaning 1
04	Second Cleaning
05	Water Cleaning 2
06	Water Cleaning 3
07	Water Cleaning 4
08	Third Cleaning
09	Water Cleaning 5
10	Water Cleaning 6
11	Hot Water
12	Drying-1
13	Natural Drying
14	Dye Penetrant
15	Penetrant Drain
16	Wash Booth
17	Drying-2
18	Dry Developer
19	Inspection - I
20	Inspection - II
21	Unloading
22	Transporter Track
23	Transporter Unit
24	Platform

SQUARE MAG SYSTEMS.			
TITLE : Pickling Process Line			
TOLERANCE	ANGLE	USED ON	Bharat Forge
EXCEPT AS NOTED	DEC	MATERIAL	---
DRAWN	G SINGH	21/02/14	QTY : ---
CHKD	DSS		REVISION 01
APP	BCS		DRG.No.
SCALE	N.T.S	PROJECTION	SPS-14-3008
			SHEET NO : 01 OF 02

**FPI FACILITY WITH PICKLING, BFL**



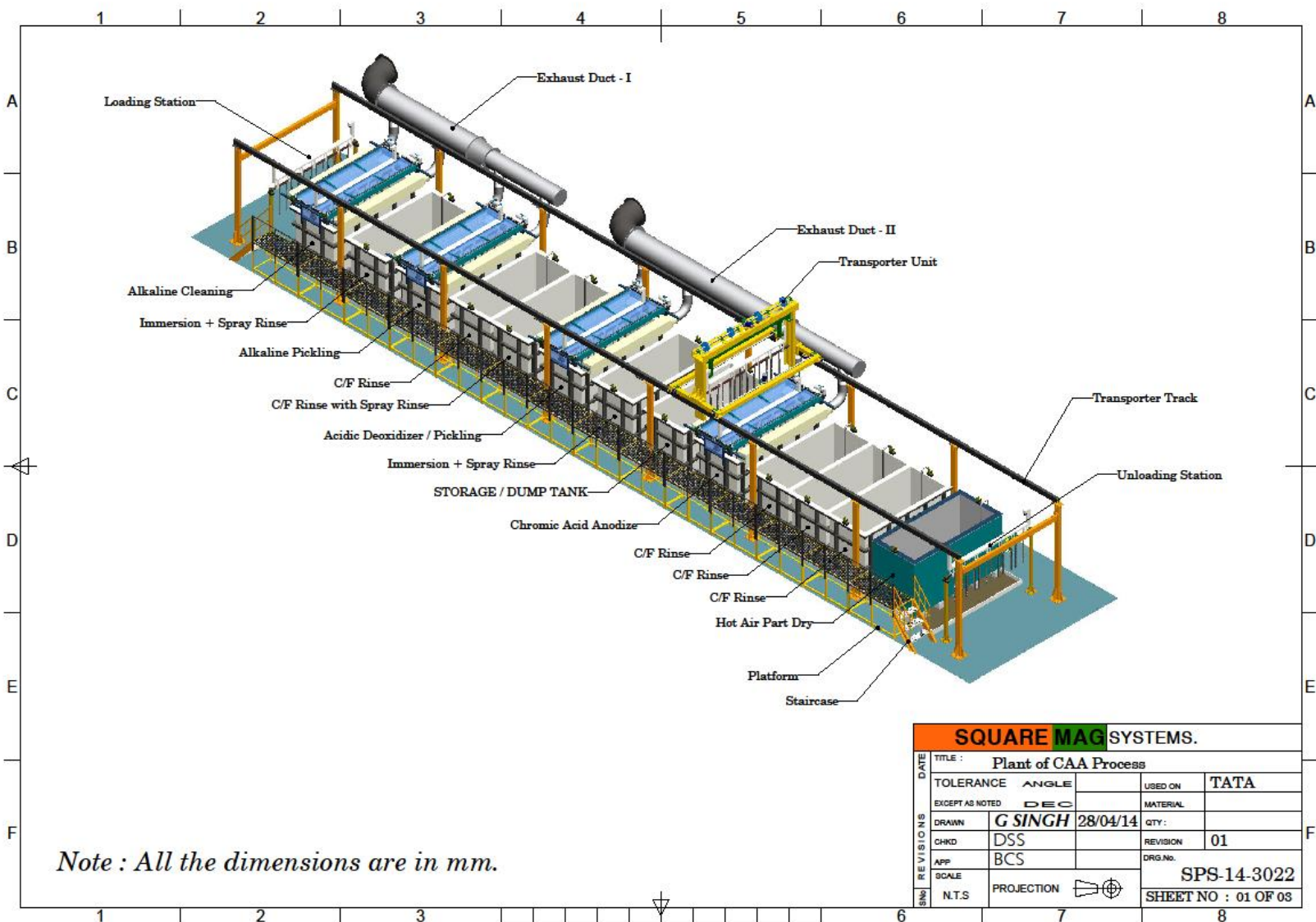


<b>SQUARE MAG SYSTEMS.</b>				
TITLE : Plant of TSAA + CAA + CCC Process				
TOLERANCE	ANGLE		USED ON	TATA
EXCEPT AS NOTED	DEC		MATERIAL	
DRAWN	G SINGH	28/04/14	QTY :	
CHKD	DSS		REVISION	01
APP	BCS		DRG.No.	SPS-14-3021
SCALE	N.T.S		SHEET NO : 01 OF 03	
PROJECTION				

TSAA+CAA+CCC LINE

# MAG

# SQUARE

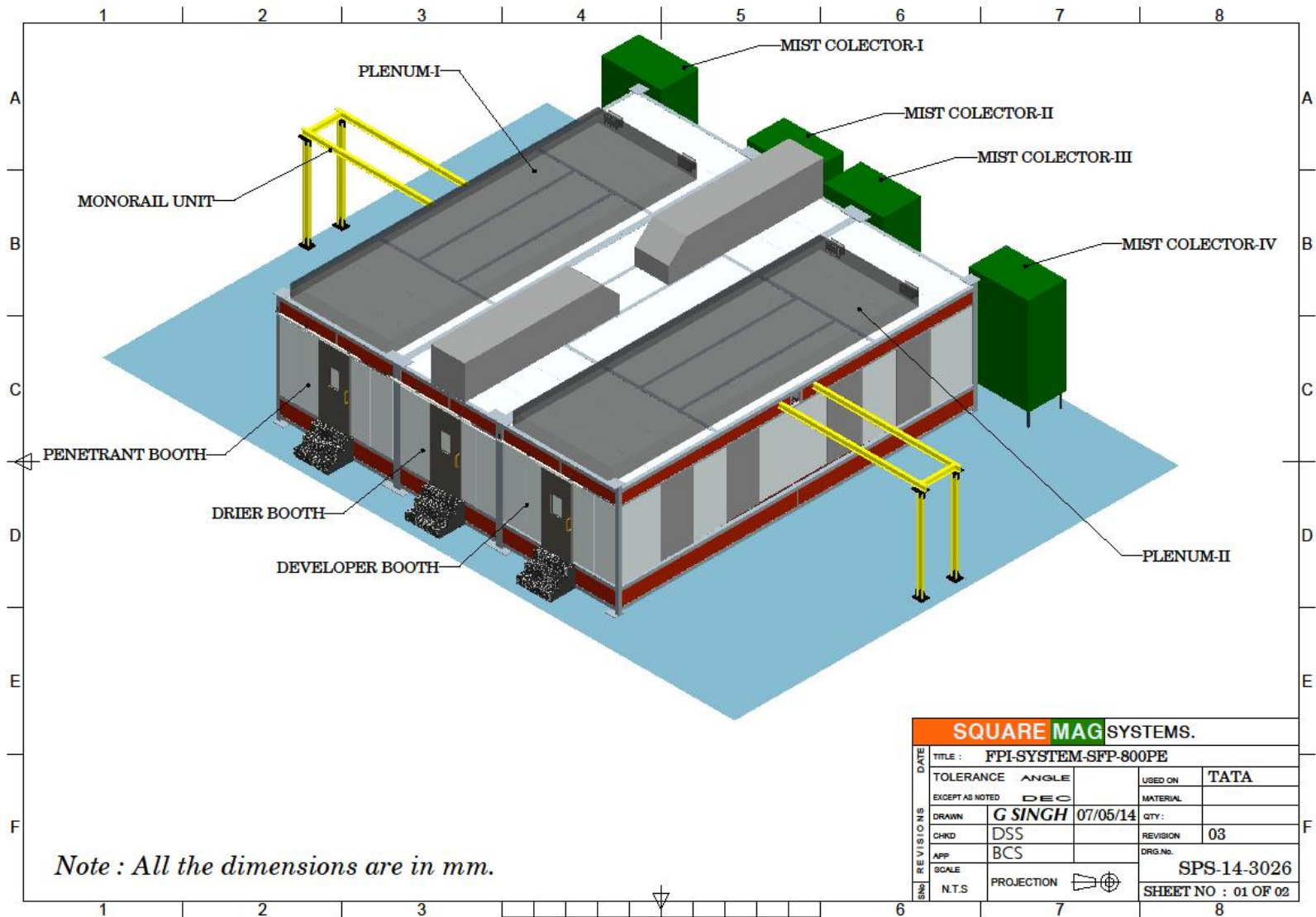


<b>SQUARE MAG SYSTEMS.</b>					
TITLE : Plant of CAA Process					
TOLERANCE	ANGLE	USED ON	TATA		
EXCEPT AS NOTED		DEC	MATERIAL		
DRAWN	G SINGH 28/04/14		QTY :		
CHKD	DSS	REVISION	01		
APP	BCS	DRG.No.	SPS-14-3022		
SCALE	N.T.S	PROJECTION			
SHEET NO : 01 OF 03					

**3 MTR CAA LINE**

# MAG

# SQUARE

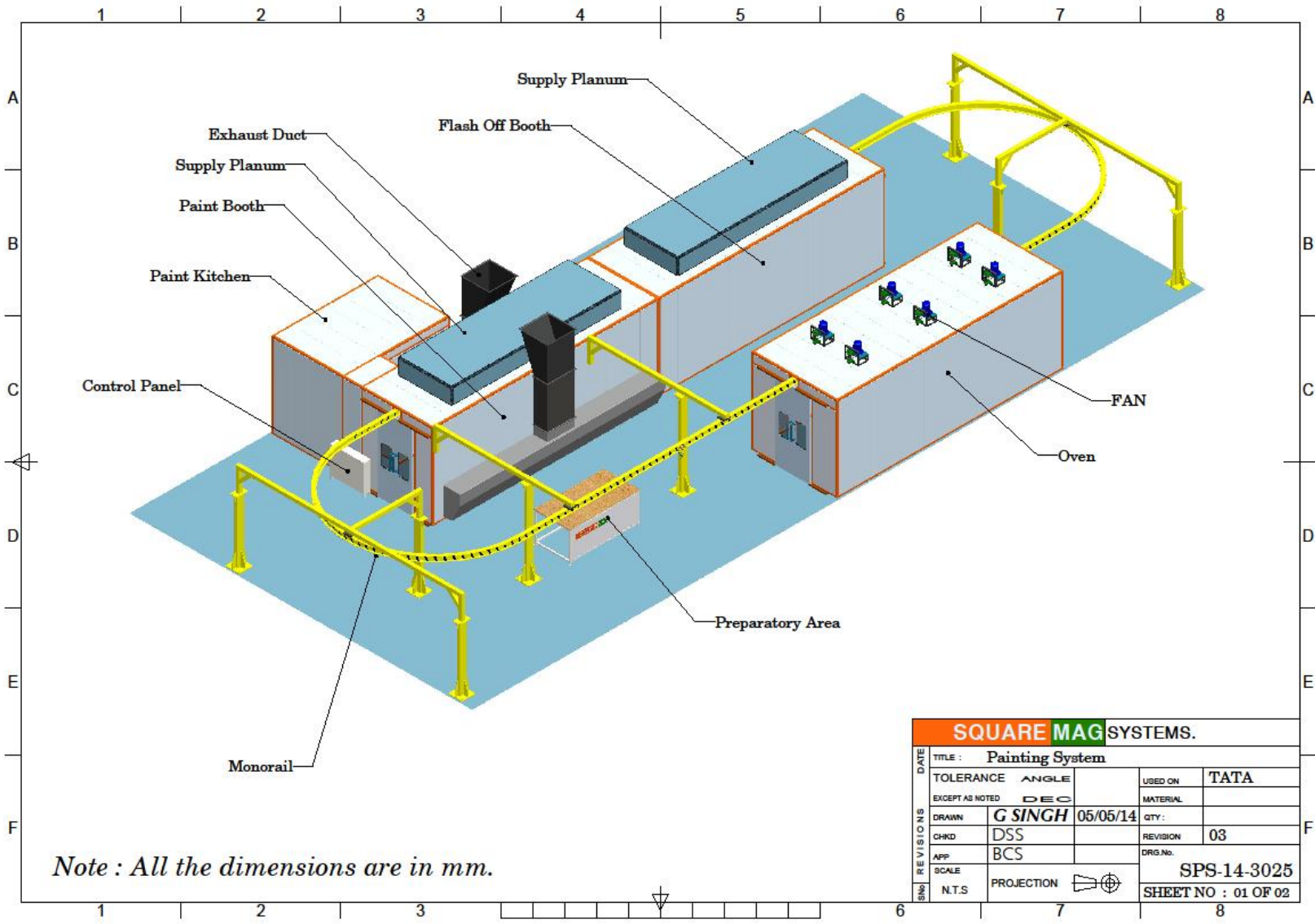


**FPI FACILITY FOR LARGE PARTS**



# MAG

# SQUARE



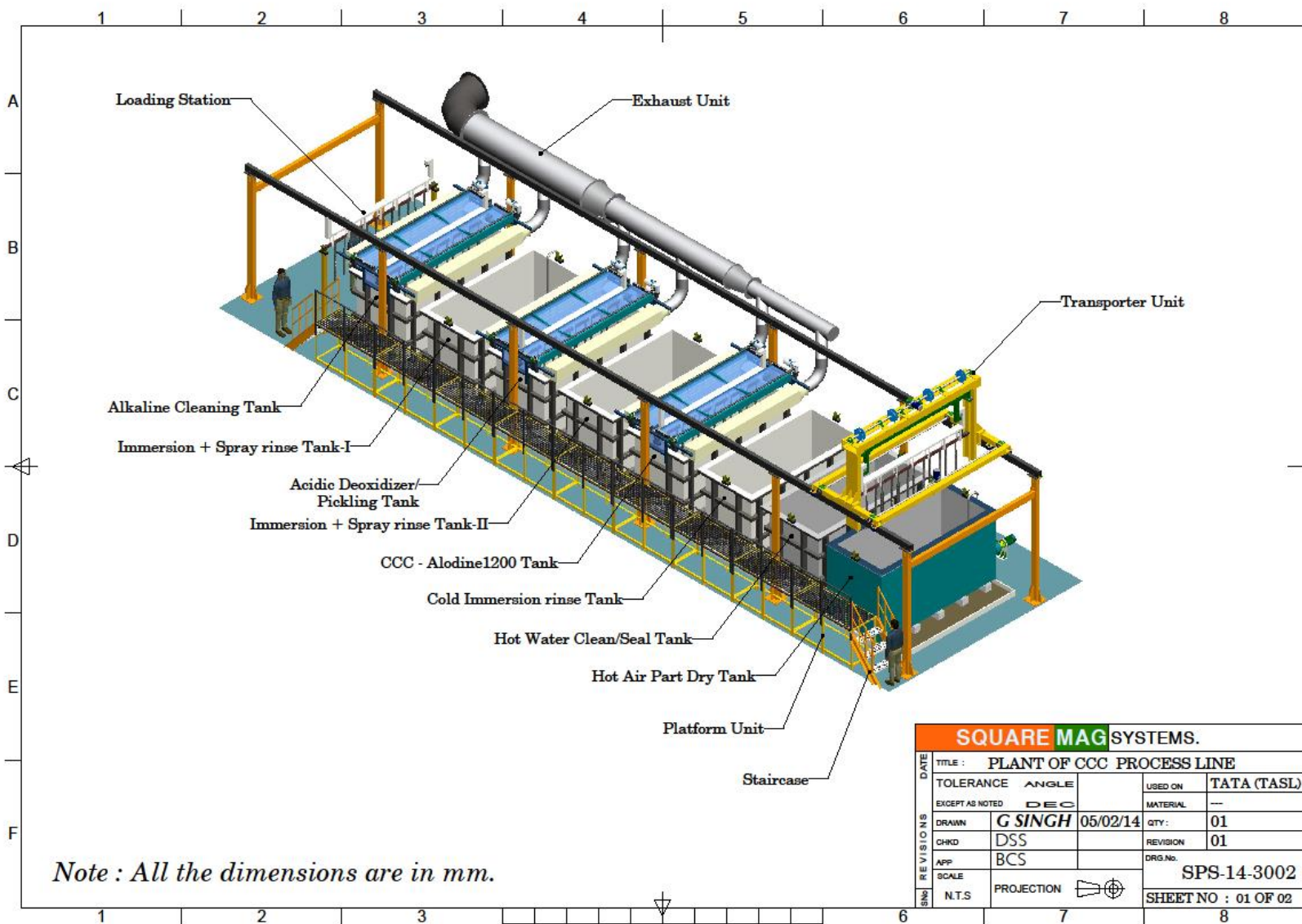
*Note : All the dimensions are in mm.*

<b>SQUARE MAG SYSTEMS.</b>				
TITLE : <b>Painting System</b>				
SINGL REVISIONS	TOLERANCE	ANGLE	USED ON	TATA
	EXCEPT AS NOTED	DEC	MATERIAL	
	DRAWN	<b>G SINGH</b>	05/05/14	QTY :
	CHKD	DSS	REVISION	03
	APP	BCS	DRG.No.	
SCALE			<b>SPS-14-3025</b>	
N.T.S	PROJECTION			<b>SHEET NO : 01 OF 02</b>

## PAINTING FACILITY

# MAG

# SQUARE



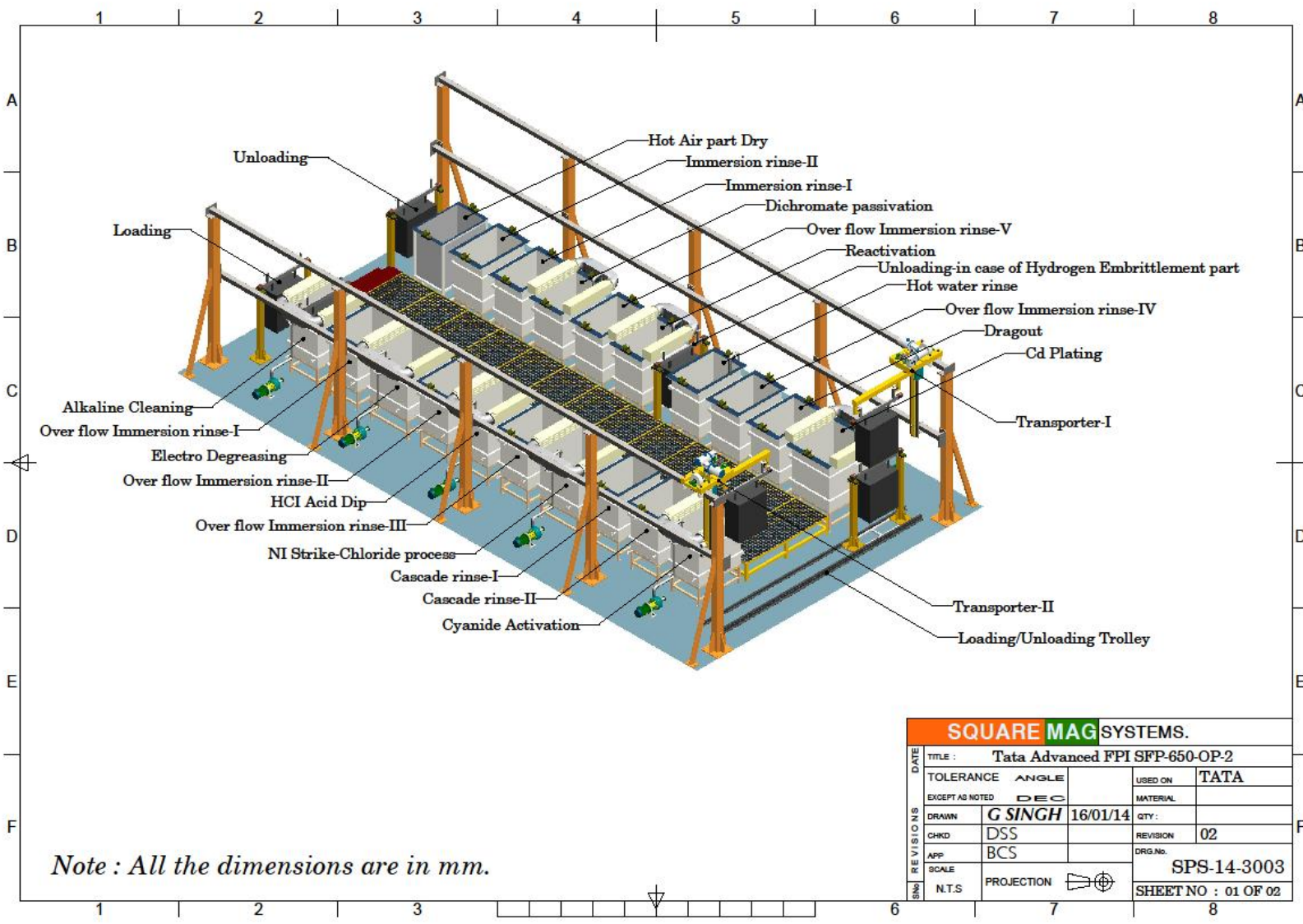
*Note : All the dimensions are in mm.*

<b>SQUARE MAG SYSTEMS.</b>				
TITLE : <b>PLANT OF CCC PROCESS LINE</b>				
TOLERANCE	ANGLE		USED ON	TATA (TASL)
EXCEPT AS NOTED	DEC		MATERIAL	---
DRAWN	<b>G SINGH</b>	05/02/14	QTY :	01
CHKD	DSS		REVISION	01
APP	BCS		DRG.No.	SPS-14-3002
SCALE				
N.T.S.	PROJECTION			SHEET NO : 01 OF 02

**CCC LINE**

# MAG

# SQUARE



Note : All the dimensions are in mm.

SQARE MAG SYSTEMS.			
DATE	TITLE : Tata Advanced FPI SFP-650-OP-2		
TOLERANCE	ANGLE	USED ON	TATA
EXCEPT AS NOTED	DEC	MATERIAL	
REVISIONS	DRAWN	16/01/14	QTY :
	CHKD	DSS	REVISION
	APP	BCS	02
	SCALE		DRG.No.
	N.T.S	PROJECTION	SPS-14-3003
			SHEET NO : 01 OF 02

## CADMIUM PLATING



**SQUARE**

**MAG**



*Thank You*